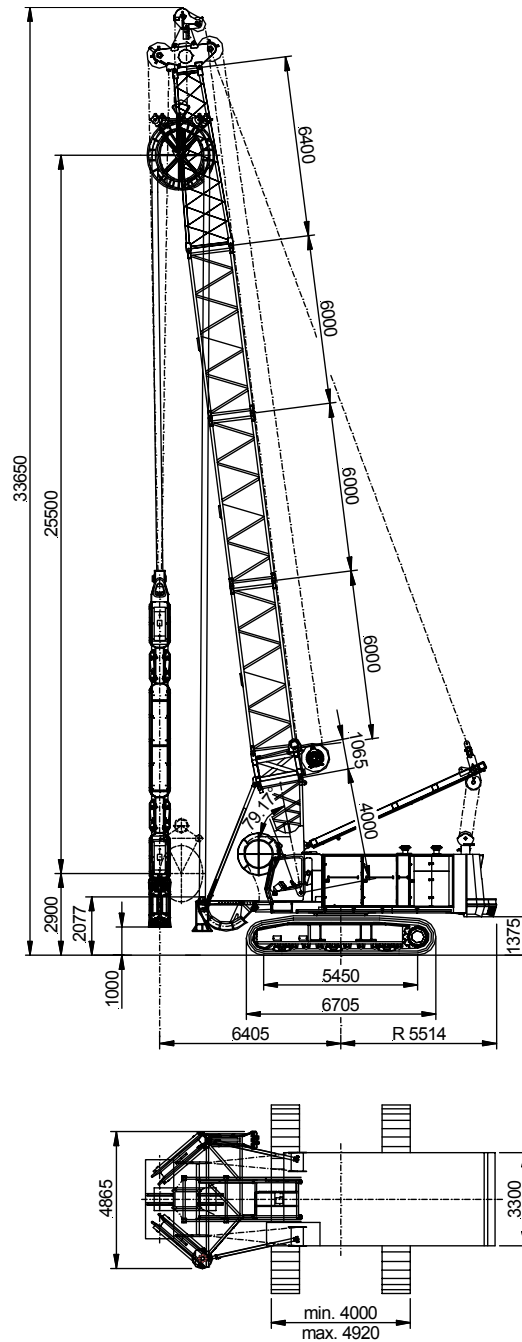


### 3 TECHNICAL SPECIFICATIONS

#### 3.1 EQUIPMENT DIMENSIONS

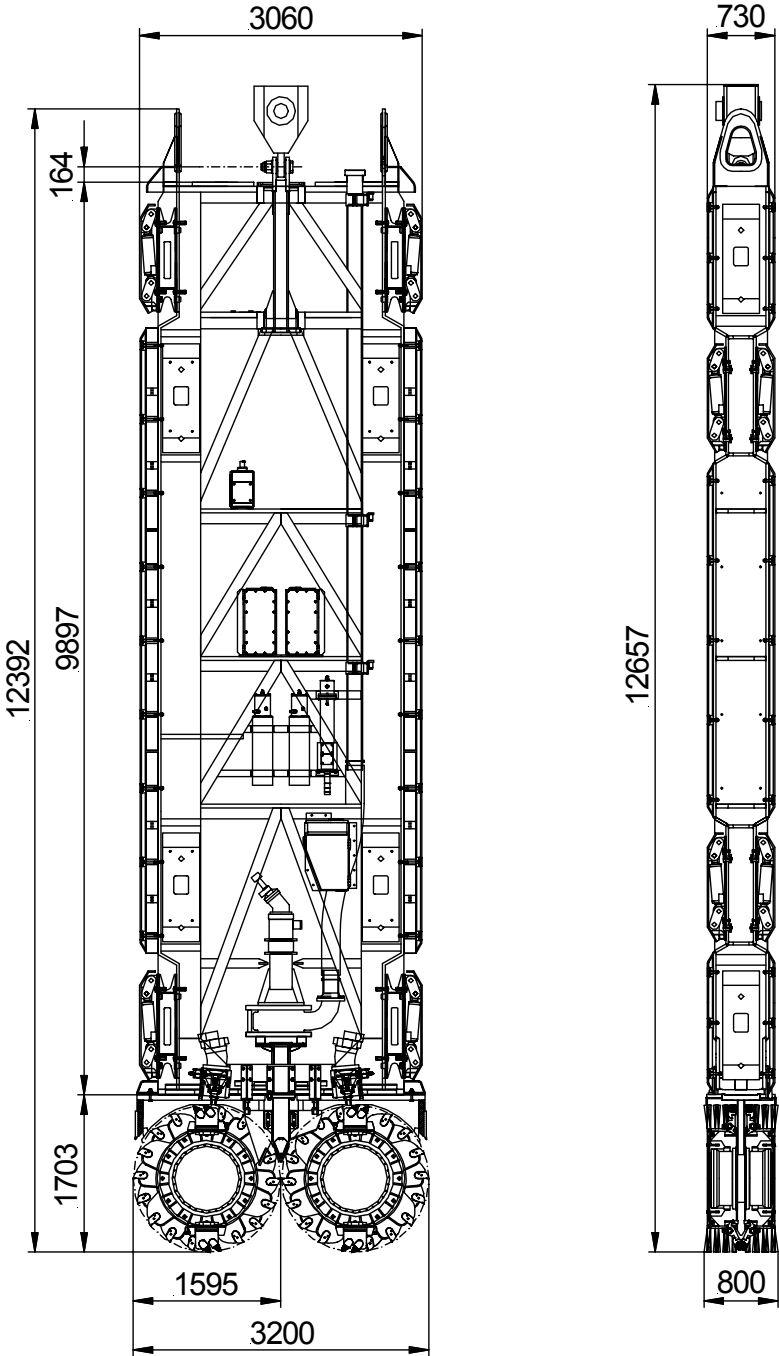
##### 3.1.1 Dimension of Cutting Equipment



Ft320502.wmf



3.1.2 Cutter Dimensions



Ft320501.wmf



### 3.2 EQUIPMENT DATA

#### Base crane

Type, model: HS 885

#### Cutter

Cutting data: Cutting width: 830 mm  
Cutting length: 3200 mm

Cutter-wheels: Rotational speed max.: 0 - 25 rpm  
Torque max.: 2 x 81 kNm

Mud pump: Type: 6"  
Pump capacity max.: see Pump Delivery Diagram  
Power consumption: 82 kW

#### Hose Tension System

Type: HTS 50  
For max. cutting depth: max. 50 m  
(measured from soil level to lower edge of cutting wheels)

Hose tension winches: Pull: 40 kN  
Rope length: 100 m  
Rope diameter: 15 mm

#### Cutter Winch

Pull: 160 kN  
Rope length: 330 m  
Rope diameter: 26 mm

#### Operational weight

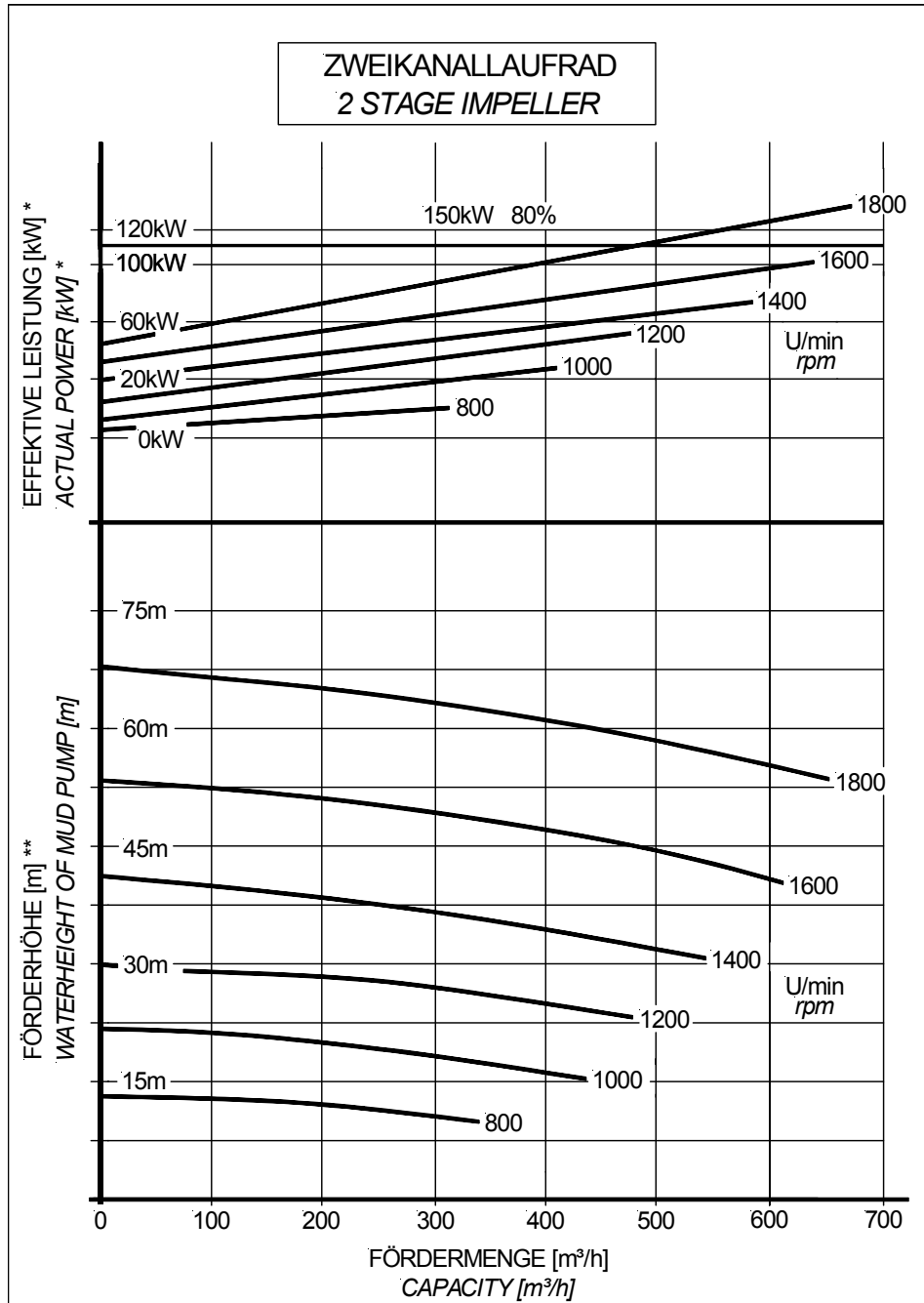
Base crane with BC and HTS: 173 to

Technical data do not consider power losses.



### 3.3 PUMP DELIVERY DIAGRAM

#### 3.3.1 For Pump Using a Two-Stage Impeller



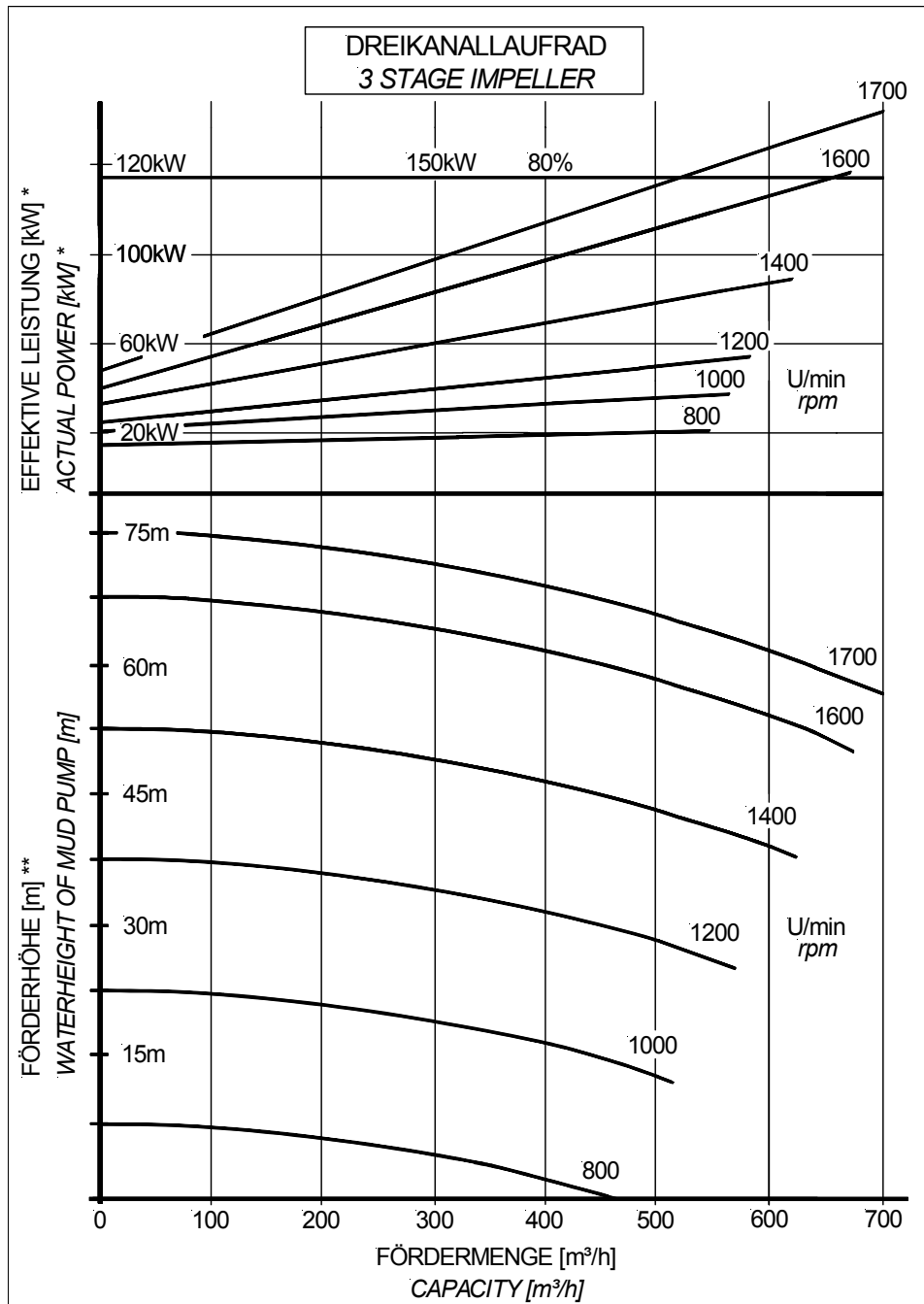
\* WIRKUNGSGRAD 80%  
EFFICIENCY 80%

\*\* FÜR WASSER  
FOR WATER

FDAAA076.wmf



3.3.2 For Pump Using a Three-Stage Impeller



\* WIRKUNGSGRAD 80%  
EFFICIENCY 80%

\*\* FÜR WASSER  
FOR WATER

FDAAA077.wmf

### 3.4 ROPE SPECIFICATIONS

#### 3.4.1 Cutter Hoist Rope

Nominal diameter:	26 mm
Length:	330 m
Permissible deviation:	+ 4.00 %
Weight per metre:	3.40 kg/m
Nominal wire strength:	1960 N/mm <sup>2</sup>
Fill factor:	0.7450
Spinning loss factor:	0.7900
Nominal aggregate breaking load:	774.70 kN
Minimum breaking load:	604.20 kN
Total metal cross section:	395.20
Total number of wires:	292
Number of load-bearing wires (outer strands):	126
Rope structure:	18 * 7 + 2 * (7 * 7) + 7 * 7 + SE (8+8+1)
Core material:	Steel inlay (SE)
Wire surface:	Bright (BK)
Type of lay, direction of lay:	Regular-lay, left (ZS)
Impregnation:	Intensively greased
Characteristics:	Low-stress (SPA), non-rotating

### 3.4.2 Hose Tension Rope

Nominal diameter:	15 mm
Length:	100 m
Permissible deviation:	+ 4.00 %
Weight per metre:	1.13 kg/m
Nominal wire strength:	1770 N/mm <sup>2</sup>
Fill factor:	0.7450
Spinning loss factor:	0.7900
Nominal aggregate breaking load:	233.60 kN
Minimum breaking load:	184.50 kN
Diameter of outer wires:	-
Total metal cross section:	132.00 mm <sup>2</sup>
Total number of wires:	292
Number of load-bearing wires (outer strands):	126
Rope structure:	18 * 7 + 2 * (7 * 7) + 7 * 7 + SE (8 + 8 + 1)
Core material:	Steel inlay (SE)
Wire surface:	Bright (BK)
Type of lay, direction of lay:	Regular-lay, left (ZS)
Impregnation:	Intensively greased
Characteristics:	Low-stress (SPA), non-rotating

### 3.4.3 Emergency Rope

Nominal diameter:	18 mm
Length:	50 m
Permissible deviation:	+ 5.00 %
Weight per metre:	1.41 kg/m
Nominal wire strength:	1770 N/mm <sup>2</sup>
Fill factor:	0.5861
Spinning loss factor:	0.7509
Nominal aggregate breaking load:	264.00 kN
Minimum breaking load:	198.00 kN
Diameter of outer wires:	0.90 mm
Total metal cross-section:	149.15 mm <sup>2</sup>
Total number of wires:	249
Number of load-bearing wires:	249
Rope structure:	8 strands + steel wire rope core SES
Core material:	Independent wire rope core (IWRC)
Wire surface:	Bright (BK)
Lay and direction:	Regular-lay, right (ZS)
Characteristics:	Low-stress (SPA)
Corrosion protection:	"Elascon 113"

### 3.5 TEMPERATURE CONDITIONS

This drilling equipment can be used in outdoor temperatures ranging from -20 °C to +40 °C (-4 to + 104 F).

Equipment operation in a climate or weather where the above temperatures are exceeded requires consultation with BAUER.

### 3.6 SOUND EMISSION

#### Inside cab:

Sound pressure level as measured in acc. with ISO/DIN 11201.

Sound pressure level  $L_{PAI} = 74.7 \text{ dB(A)}$

### 3.7 VIBRATIONS

The vibrations on the driver's seat are below  $0,5 \text{ m/s}^2$ .